

During installation: Make sure you accept the default settings and/or **unblock**, unless other instructions are given in the Installation Guide and other instruction material.

1 GET TO KNOW THE SUPPORT MATERIALS

- SimMan/SimBaby Installation Guide
- SimMan/SimBaby DFU
- SimMan/SimBaby PDA User Guide



2 START YOUR COMPUTER

Make sure that your computer has the SimBaby/SimMan logo on the screen.

3 INSTALL THE USB HUB

A USB hub is provided with the system to overcome potential problems of having too few USB ports on the computer and to have fewer cables from the computer in the manikin area.

- Unpack the USB Hub from its box
- Connect power to the USB Hub
- Connect the USB Hub to the PC

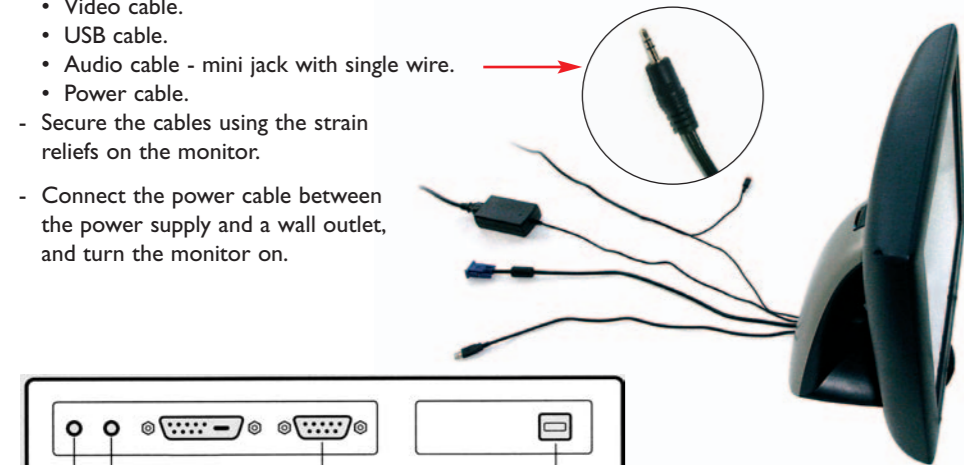


4 CONNECT THE PATIENT MONITOR

- Unpack the Patient Monitor and cables.
- Do **NOT** use the Software CD that comes with the monitor. Software for the monitor is part of the SimMan/SimBaby installation
- Get the Audio cable from the Link Box package.

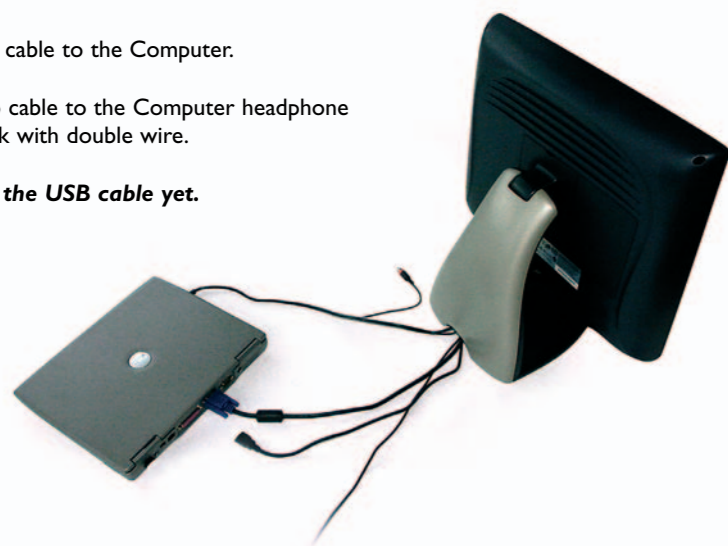


- Route the cables through the Monitor Stand and connect the cables to the monitor connectors: (refer to accompanying R10 documents for details)
 - Video cable.
 - USB cable.
 - Audio cable - mini jack with single wire.
 - Power cable.



5 CONNECT THE MONITOR CABLES TO THE COMPUTER

- Connect the Video cable to the Computer.
- Connect the Audio cable to the Computer headphone output - phono jack with double wire.
- Do **NOT** connect the USB cable yet.



6 INSTALL THE MONITOR ON THE COMPUTER

- Right click on the Desktop and select **Properties**.
- Select the **Settings** tab.
 - Select Display 2.
 - Set Resolution to 1280 x 1024 pixels.
 - Check **Extend my Windows desktop onto this monitor**.
 - Click **OK**.
- If prompted: Answer **Yes** to keep this setting.



7 INSTALL THE MONITOR TOUCH SCREEN DRIVERS

- Connect the Monitor USB cable to the computer.
- Windows will automatically detect the new device, and install a driver for it.

It is important that the SimMan/SimBaby software has been installed before the touch screen is connected, so that the correct driver is installed.

- If a message about signed drivers occurs on the screen, click **Continue Anyway**.

8 CALIBRATE THE TOUCH SCREEN MONITOR

- Double click on the **elo** logo in the system tray in the lower right corner of the screen. (If you cannot find it in the system tray, activate Elo Touchscreen in the Control Panel).



- Click on the **Align** button on the dialog that appears.

- If target indicators first appear on the computer screen, press **Esc**, or wait until they appear on the Patient Monitor.



- When the target appears on the Patient Monitor, touch each target as it changes position, and finally touch the green tic button.

9 CONNECT THE MANIKIN TO THE COMPUTER

- Unpack the Link Box and cables.

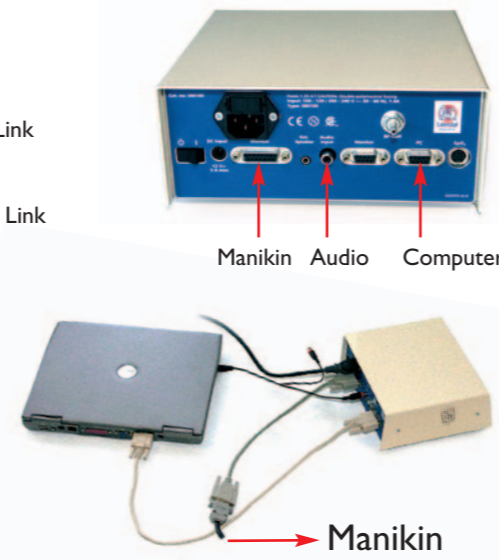
- Unpack the Manikin.

- Connect the 9-pin serial cable from the Link Box to the computer.

- Connect the 15-pin serial cable from the Link Box to the SimMan/SimBaby Manikin.

- Connect the last connector of the Audio cable to the Audio input jack on the Link Box (Audio cable should already be connected to the computer and the monitor).

- Connect the Link Box power cable to the wall outlet and turn the Link Box on.



10 UPDATE THE SOFTWARE IN THE MANIKIN AND LINK BOX

Connection cannot be accomplished if SimMan/SimBaby Software is running.

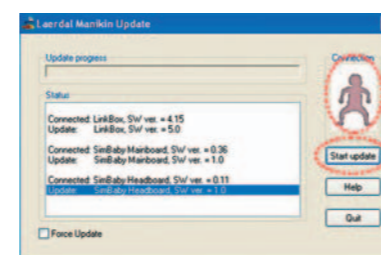
- Start the **Manikin Update** program from the **Start Menu**.



- Make sure that a manikin logo is indicated in the connection field and then click **Start Update**.

- This program will automatically update all software in the Link Box and in the Manikin.

- Click **Quit** after the installation is finished.



- If no connection is indicated, check your connections, and make sure that the Link Box is turned on.

11 INSTALL THE COMPRESSOR OR REGULATOR UNIT

- Unpack the compressor with power cable. Connect the power cable to the compressor and a wall outlet.

- Unpack the compressor air tube and connect it between the manikin and the compressor.

- Operate the unit according to accompanying instructions.



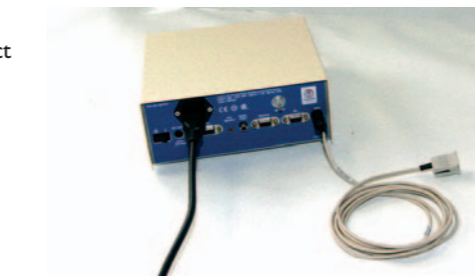
12 CONNECT THE BLOOD PRESSURE CUFF TO THE LINK BOX

- Unpack the BP cuff and connect to the air input on the Link Box.



13 CONNECT THE SpO2 PROBE TO THE LINK BOX

- Unpack the simulated SpO2 probe and connect to the SpO2 input on the Link Box.



14 SET UP BLUETOOTH CONNECTION TO THE PDA

If your configuration includes a laptop, your laptop and PDA have been pre-programmed. See PDA User Guide for instructions for use.

You are now ready to start using your SimMan/SimBaby system

If your SimMan purchase included a laptop supplied by Laerdal follow the instructions on page 6-8.
If your purchase did not include a laptop follow the instructions on page 2-5.



© 2006 Laerdal Medical AS All Rights reserved N0410 rev B

CHECK EQUIPMENT

(Images below are examples only. Actual components may vary.)

- Manikin with accessories
- Software CD
- Directions for Use
- Installation Guide
- PDA User Guide



USB Hub box



USB Camera box



Accessories bag
- Manikin cable:
- 15-pin serial cable
- Power cables - Link Box
- Air tube



- PDA with accessories



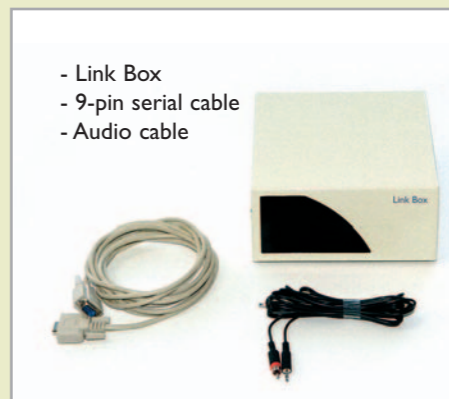
- Computer with accessories



- Monitor
- Video cable
- Powersupply with cable
- USB cable



- Compressor with accessories



- Link Box
- 9-pin serial cable
- Audio cable



- Regulator Unit with accessories

During installation: Make sure you accept the default settings and/or **unblock**, unless other instructions are given in the Installation Guide and other instruction material.

1 GET TO KNOW THE SUPPORT MATERIALS

- SimMan/SimBaby Installation Guide
- SimMan/SimBaby DPU
- SimMan/SimBaby PDA User Guide



2 START YOUR COMPUTER

Make sure that the computer you are using meets the following requirements:

Recommended Laptop Specification	Other:
Type: Dell Latitude	CD-RW
Processor: Pentium M, 1.8GHz	RS-232 (serial port)
HDD: 60 GB	Microphone input
RAM: 512 MB min.	Headphone output
System: Win XP Pro	2-4 USB ports
Screen: Dual screen with 1280 x 1024	Internal Bluetooth
Mouse: 2 button scroll wheel mouse	Built-in Ethernet LAN

Insert the mouse to the PC via the USB-connector.

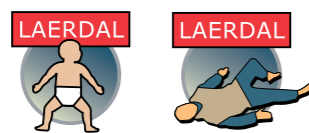
3 INSTALL THE USB HUB

A USB hub is provided with the system to overcome potential problems of having too few USB ports on the computer and to have fewer cables from the computer in the manikin area.

- Unpack the USB Hub from its box
- Connect power to the USB Hub
- Connect the USB Hub to the PC



4 PREPARE PDA



- Unpack the PDA Box.

Note:

Charge the battery according to the instructions supplied with your PDA.

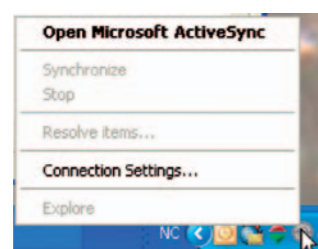
ActiveSync must be installed on the computer as a part of the PDA installation, before PDA is connected to the computer.

- Follow the instructions that come with PDA for installation and use.
- During installation of ActiveSync, choose installing **ActiveSync** only and not **Outlook** or **Windows Media Player**.
- Choose **Guest partnership** when prompted.
- Leave PDA connected to the computer after installation is finished.



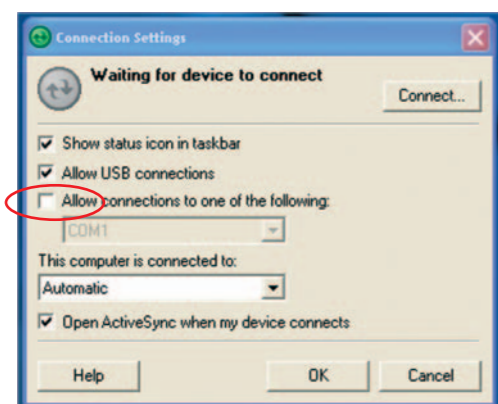
5 CONFIGURE ACTIVESYNC CONNECTION SETTINGS

Right click on the ActiveSync icon in the System tray. Choose **connection settings**.



In following dialog box:

- Uncheck **Allow connection to one of the following**:
- Click OK.



6 INSTALL SIMMAN/SIMBABY SOFTWARE ON THE COMPUTER

This installation will install software and drivers for the SimMan or SimBaby software application.

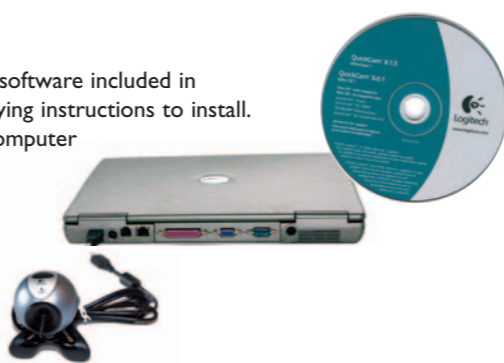
- Insert the SimMan or SimBaby software CD and select **Install SimMan** or **Install SimBaby** from the installation menu.
- On any questions during installations, click **Next** or **Continue anyway**.
- Debrief viewer will be automatically installed.
- When the Software installation is finished, select **Install PDA** from the installation menu.
- Exit the installation window.

Do not start SimMan/SimBaby application yet.



7 INSTALL USB WEB CAMERA

Unpack the USB Web Camera and camera software included in the web-camera box. Follow the accompanying instructions to install. Connect the Web camera directly to the computer (not Hub) when prompted.

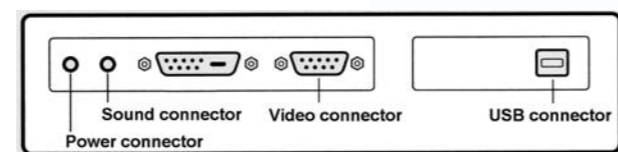


8 CONNECT THE PATIENT MONITOR

- Unpack the Patient Monitor and cables.
- Do **NOT** use the Software CD that comes with the monitor. Software for the monitor is part of the SimMan/SimBaby installation
- Get the Audio cable from the Link Box package.

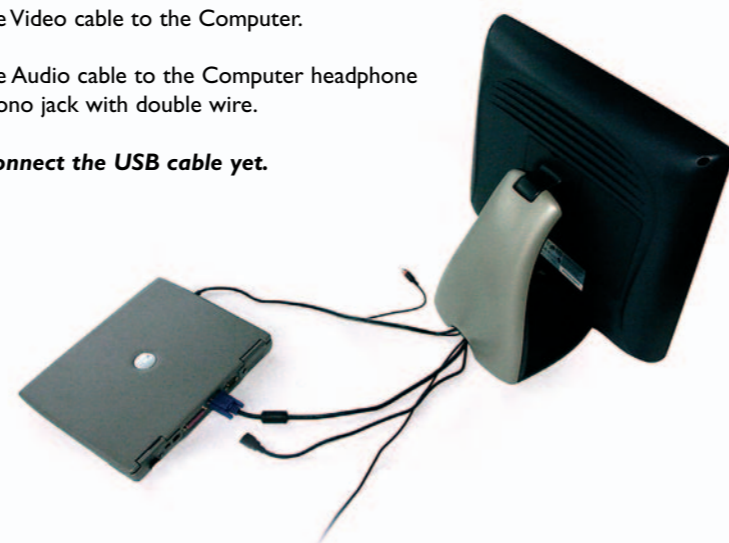
- Route the cables through the Monitor Stand and connect the cables to the monitor connectors: (refer to accompanying R10 documents for details)
 - Video cable.
 - USB cable.
 - Audio cable - mini jack with single wire.
 - Power cable.
- Secure the cables using the strain reliefs on the monitor.

- Connect the power cable between the power supply and a wall outlet, and turn the monitor on.



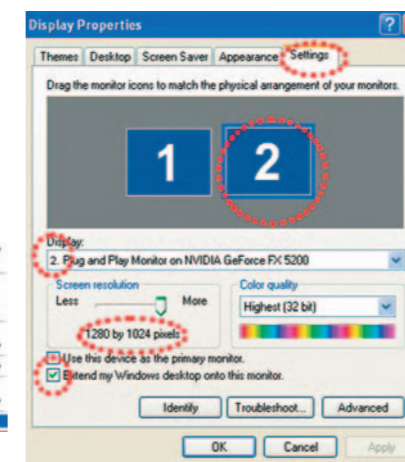
9 CONNECT THE MONITOR CABLES TO THE COMPUTER

- Connect the Video cable to the Computer.
- Connect the Audio cable to the Computer headphone output - phono jack with double wire.
- Do **NOT** connect the USB cable yet.



10 INSTALL THE MONITOR ON THE COMPUTER

- Right click on the Desktop and select **Properties**.
- Select the **Settings** tab.
- Select Display 2.
- Set Resolution to 1280 x 1024 pixels.
- Check **Extend my Windows desktop onto this monitor**.
- Click **OK**.
- If prompted: Answer **Yes** to keep this setting.



11 INSTALL THE MONITOR TOUCH SCREEN DRIVERS

- Connect the Monitor USB cable to the computer.
- Windows will automatically detect the new device, and install a driver for it.

It is important that the SimMan/SimBaby software has been installed before the touch screen is connected, so that the correct driver is installed.

- If a message about signed drivers occurs on the screen, click **Continue Anyway**.

12 CALIBRATE THE TOUCH SCREEN MONITOR

- Double click on the **elo** logo in the system tray in the lower right corner of the screen. (If you cannot find it in the system tray, activate Elo Touchscreen in the Control Panel).



- Click on the **Align** button on the dialog that appears.

- If target indicators first appear on the computer screen, press **Esc**, or wait until they appear on the Patient Monitor.

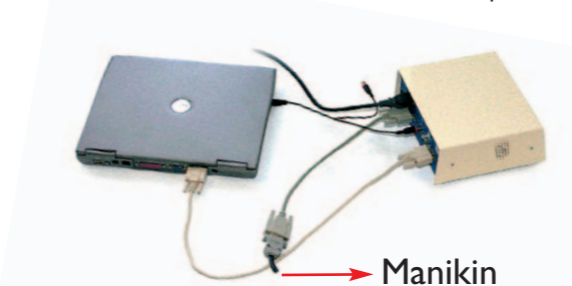


- When the target appears on the Patient Monitor, touch each target as it changes position, and finally touch the green tic button.



13 CONNECT THE MANIKIN TO THE COMPUTER

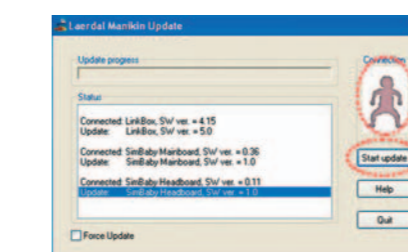
- Unpack the Link Box and cables.
- Unpack the Manikin.
- Connect the 9-pin serial cable from the Link Box to the computer.
- Connect the 15-pin serial cable from the Link Box to the SimMan/SimBaby Manikin.
- Connect the last connector of the Audio cable to the Audio input jack on the Link Box (Audio cable should already be connected to the computer and the monitor).
- Connect the Link Box power cable to the wall outlet and turn the Link Box on.



14 UPDATE THE SOFTWARE IN THE MANIKIN AND LINK BOX

Connection cannot be accomplished if SimMan/SimBaby Software is running.

- Start the **Manikin Update** program from the Start Menu.
- Make sure that a manikin logo is indicated in the connection field and then click **Start Update**.
- This program will automatically update all software in the Link Box and in the Manikin.
- Click **Quit** after the installation is finished.
- If no connection is indicated, check your connections, and make sure that the Link Box is turned on.



15 INSTALL THE COMPRESSOR OR REGULATOR UNIT

- Unpack the compressor with power cable. Connect the power cable to the compressor and a wall outlet.
- Unpack the compressor air tube and connect it between the manikin and the compressor.
- Operate the unit according to accompanying instructions.



16 CONNECT THE BLOOD PRESSURE CUFF TO THE LINK BOX

- Unpack the BP cuff and connect to the air input on the Link Box.



17 CONNECT THE SpO2 PROBE TO THE LINK BOX

- Unpack the simulated SpO2 probe and connect to the SpO2 input on the Link Box.



18 SET UP BLUETOOTH CONNECTION TO THE PDA

Set up your Bluetooth connection using the accompanying PDA User Guide.

You are now ready to start using your SimMan/SimBaby system