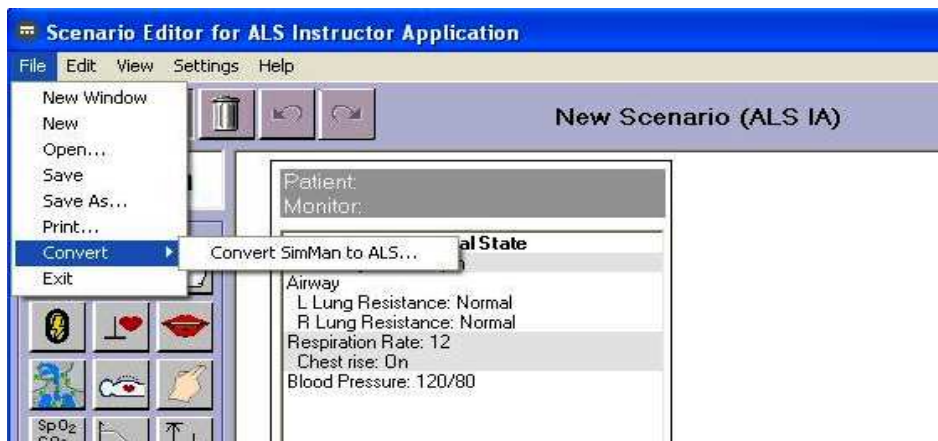


# Convert SimMan scenarios to ALS Simulator Advanced

1. Install SimMan software. Can be downloaded from [www.laerdal.com/download](http://www.laerdal.com/download)
2. Install SimMan scenario package
3. Open ALS Sim Adv Scenario Editor

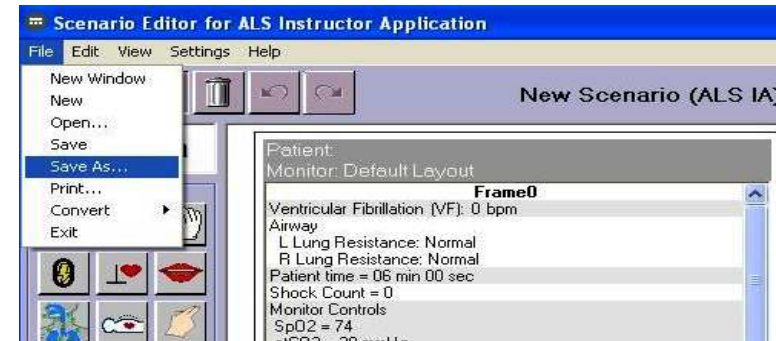


4. Click Convert SimMan to ALS... from the File menu

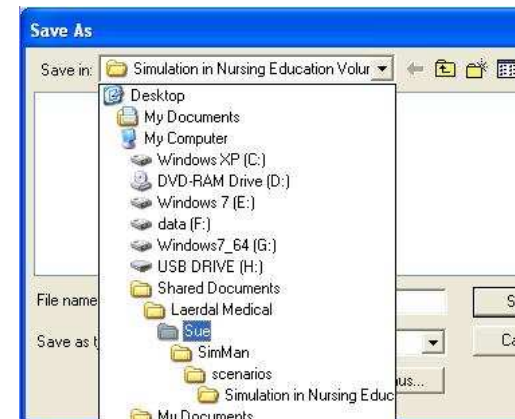


5. The convert tool will open SimMan scenario location. Select the folder and open the scenario to convert.

6. Conversion Log is created with details that are not available in ALS Sim Adv. Review the details and close log.
7. Save the converted scenario.



For first file, locate the folder C:\Documents and Settings\All Users\Documents\Laerdal Medical\



8. Repeat from step 4 if there are more scenarios that need to be converted. For next scenario save folder will be the same as last time.

Contact Laerdal support if there are problems with converting scenarios.