



Welcome

Simulation Planning Workshop

---

---

---


---

---

---

---

---

**SUN** SIMULATION **user** NETWORK 

### Today's Objectives and Goals

- Learn from others who have been through the process
- Understanding available resources
- Identify Needs, Goals and Vision
- Use the Simulation Planning Guide (SPG)

Consulting • Education • Support  
<http://simulation.laerdal.com>

---

---

---

---

---

---

---

---

**SUN** SIMULATION **user** NETWORK 

### Learn from others



Consulting • Education • Support  
<http://simulation.laerdal.com>

---

---

---

---

---


---

---

---

**SUN user NETWORK** **Laerdal**

Understand available resources



Consulting • Education • Support  
<http://simulation.laerdal.com>

---

---

---

---

---

---

---

---

**SUN user NETWORK** **Laerdal**

Identify Needs, Goals and Vision

Creating Buy-in

Buy-in may be defined as the understanding, commitment, and action of people working to achieve strategic objectives. Obtaining buy-in from peers and leaders to adopt new teaching strategies, including simulation, depends heavily on the communication skills of the simulation champion.

Consulting • Education • Support  
<http://simulation.laerdal.com>

---

---

---

---

---

---

---

---

**SUN user NETWORK** **Laerdal**

Familiarize yourself with the SPG

A Consultative Process to provide solutions based on an assessment of needs for a Simulation-based Educational strategy.

Consulting • Education • Support  
<http://simulation.laerdal.com>

---

---

---

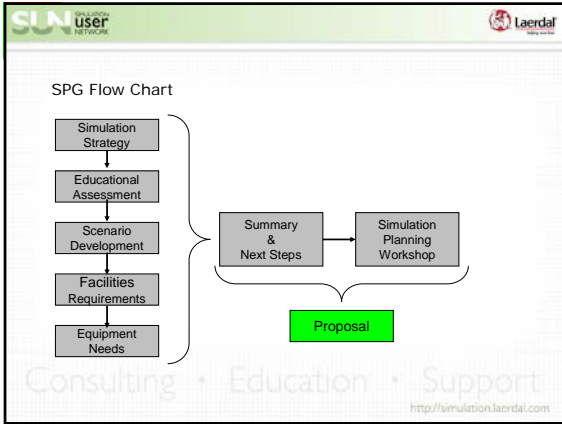
---

---

---

---

---




---

---

---

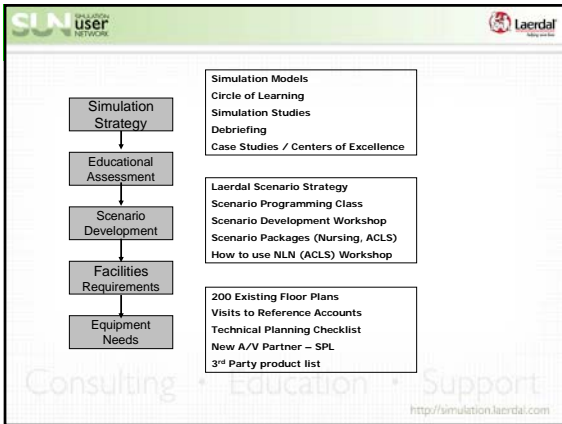
---

---

---

---

---




---

---

---

---

---

---

---

---

**Simulation Strategy**

- Educational Vision & Goals
  - Do you have a strategy for simulation?
    - Simulation is not just a tool, it changes the way we educate
  - What best describes your usage & current status?
  - What are your goals?
  - Where are you in the project cycle?
    - Grant Application
    - Funding Procurement
    - Project team in place
- Have the key stakeholders been identified?
  - Who are the decision makers?
  - Who is running the project?
  - Who is doing the work? (Internal / 3rd party)
    - Do you have architects, contractors, A/V support?

Consulting • Education • Support  
<http://simulation.laerdal.com>

---

---

---

---

---

---

---

---

**SUN** Simulation  
**user**  
Network

**Laerdal**  
Simulation

## Educational Assessment

- Where are you currently in your adoption of simulation
  - Discovery – Development – Trial - Teaching
  - What is working well today? Challenges?
    - What do you hope to Improve, Reduce or Eliminate
- What are your plans going forward?
  - Use the Circle of Learning as a guide
  - Educational plans – wants & needs... Not equipment
  - Increase through put
  - Additional revenue generation

How do you currently evaluate outcomes?  
– Debriefing methods?

Consulting • Education • Support  
<http://simulation.laerdal.com>

---

---

---

---

---

---

---

---

**SUN** Simulation  
**user**  
Network

**Laerdal**  
Simulation

## Scenario Development Laerdal's Strategy

- Deliver Targeted Offerings
  - Patient Cases must meet needs of end user
    - Basic Nurse Education; ACLS; Disaster Preparedness
  - Right platform / simulator/ Vital Sim/ Task Trainer
    - SimNewB, SimBaby, SimMan, 3G
  - Validated by peers
    - NLN, AHA, NRP etc....
- Customize Where and When Needed
  - Build to specific Curriculum needs
    - Design Workshop
  - Modify / Personalize Scenario Packages
- Educate
  - How to Develop & Program
  - How to Run / Enhance / Debrief

The best solution may be a mix

Consulting • Education • Support  
<http://simulation.laerdal.com>

---

---

---

---

---

---

---

---

**SUN** Simulation  
**user**  
Network

**Laerdal**  
Simulation

## Facilities Assessment

- Educational Goals drive facilities plans
- Circle of Learning moves from What? to Where?
- Training areas
  - Available Floor space
  - Number of Faculty / Students 'Thru Put'
  - Debriefing method
  - Resource / Support Areas
    - Control Room
    - Skill Stations
    - Class Rooms
    - Storage
    - In Situ
- A/V Requirements
  - Focus on Educational Goals & Debriefing Models
    - What do you want to capture in each room?
- Power / Compressed Air – Driven by Equipment needs

Consulting • Education • Support  
<http://simulation.laerdal.com>

---

---

---

---

---

---

---

---

**SUN user NETWORK** **Laerdal**

## Equipment & Services

- Circle of Learning - How?
  - How do you plan to deliver on Education Goals?
  - Tools "Products required"
  - Location of these classes?
  - Support Equipment
    - A/V and I/T involvement
      - Debriefing models drive camera selection & placement
        - » Bedside
        - » Skills vs. Teamwork (CRM)
      - Control Room & AVS System
        - » Simultaneous simulations
        - » Rebroadcast to Classrooms
        - » Capture for Teacher's use
    - Other Support Equipment
      - False Headwall
      - Backdrops
      - Beds to bedpans...

Consulting • Education • Support  
<http://simulation.laerdal.com>

---

---

---

---

---

---

---

---

---

---

---

---

**SUN user NETWORK** **Laerdal**

## Summary & Next Steps

- Issues & Recommendations
  - Reference Sites
    - "Look like you..."
  - Skill needs
    - Architect / Project Coordinator
    - Scenario Development
    - Faculty & Staff Training
    - Technical Support
      - Laerdal Tech Services
      - A/V Partner
  - Funding Commitment
    - Grant Sources
  - Other...
- Is a Simulation Planning Workshop required?

Consulting • Education • Support  
<http://simulation.laerdal.com>

---

---

---

---

---

---

---

---

---

---

---

---

**SUN user NETWORK** **Laerdal**

## Simulation Planning Workshop

- Initial outline of Key Players and expectations
  - Opportunity for Solution Planning
- Goals and Focus Areas for meeting
  - Attendees
    - Project manager, Administration...
    - Architect
    - Laerdal Team (TM, ESS, FSE)
    - A/V partner
    - Purchasing
    - Faculty
- Use Summary / Issues / Recommendation work from SPG
- Facilities & Equipment Plans are derived from Sim Strategy
  - Keep Simulation Strategy / Education Goals in focus

Consulting • Education • Support  
<http://simulation.laerdal.com>

---

---

---

---

---

---

---

---

---

---

---

---

**SUN user** 

## Resources

- "Using Simulation Based Training to Improve Patient Safety"
  - Journal on Quality and Patient Safety – July 2005
- "Use of Human Patient Simulators – Best Practices"
  - Nurse Educator – July / Aug 2006
- "Effect of Practice on Standardize Learning Outcomes"
  - Medical Education - 2006
- "The Role of Debriefing in Simulation-Based Learning"
  - Society for Simulation in Healthcare – Summer 2007
- "Theory and Method for Debriefing with Good Judgment"
  - Society for Simulation in Healthcare – Spring 2006

Consulting • Education • Support  
<http://simulation.laerdal.com>

---

---

---

---

---

---

---

---

**SUN user** 

## Questions

## Comments

## Ideas

Consulting • Education • Support  
<http://simulation.laerdal.com>

---

---

---

---

---

---

---

---